

TRALIFT® TT

electric chain hoist

www.tractel.com

tralift® TT electric chain hoist

design and performance for lifting operations

The tralift® TT is designed to stand up to even the most demanding work environments. High quality materials, custom options and excellent reliability make the tralift® TT the electric chain hoist of choice for a variety of industries.

IDEAL FOR HARSH WORK ENVIRONMENTS

- H4 duty cycle
- Meets ANSI/ASME B30.16, as well as CSA and CE standards
- Recommended for dusty, humid, and/or outdoor applications with an IP 65 protection rating
- Increased life span due to permanent lubrication of gearbox and manganese-phosphate case-hardened steel chain
- Capable of working in temperatures from 5°F to 122°F (-15°C to 50°C)

PREMIUM DESIGN AND RELIABILITY

- Extended continuous use with optimal cooling system
- Minimal wear
- Designed and manufactured in Europe to the highest standards

EASY TO OPERATE AND MAINTAIN

- Quiet running (65 dB)
- Compact design reduces weight and head room requirements
- Easy to maintain: modular design enables wearing parts to be quickly and easily removed and replaced

SAFE

- Low-wear DC-spring-loaded brake
- Embedded load limiter
- Adjustable low and high electrical limit switches
- Strengthened load hook with forged safety latch

VARIETY OF OPERATING CONFIGURATIONS

- Capacity from ¼ to 2 t
- Standard lifting height of 10 and 20 ft. (3 and 6 m)
- Lifting speed: 8 to 32 ft./min (2.4 to 9.8 m/min)
- Single Phase Power Supply (115V/1Ph/60Hz) or 3 phases (230V/3Ph/60Hz)
- Ergonomic pendant control



SINGLE PHASE HOISTS

MODEL FOR 10 FT. (3 M) LIFT	CAPACITY	FALLS	VOLTAGE 60 HZ	PHASE	LIFTING SPEED 60 HZ	AMPERAGE
TT0251N1151-10	0.25 t	1	115-60 Hz	1	32 ft./min (9.6 m/min)	16 A
TT0251L1151-10		1			16 ft./min (4.8 m/min)	
TT051L1151-10	0.5 t	1	115-60 Hz	1	16 ft./min (4.8 m/min)	16 A
TT0252N1151-10		2			16 ft./min (4.8 m/min)	
TT0252L1151-10		2			8 ft./min (2.4 m/min)	
TT052L1151-10	1 t	2	115-60 Hz	1	8 ft./min (2.4 m/min)	16 A



3 PHASE HOISTS

MODEL FOR 10 FT. (3 M) LIFT	CAPACITY	FALLS	VOLTAGE 60 HZ	PHASE	LIFTING SPEED 60 HZ	AMPERAGE
TT0251N2303-10	0.25 t	1	230-60 Hz	3	32 ft./min (9.6 m/min)	5.4 A
TT0251L2303-10		1			16 ft./min (4.8 m/min)	3.7 A
TT051N2303-10	0.5 t	1	230-60 Hz	3	32 ft./min (9.6 m/min)	5.4 A
TT051L2303-10		1			16 ft./min (4.8 m/min)	3.7 A
TT0252N2303-10		2			16 ft./min (4.8 m/min)	5.4 A
TT0252L2303-10	1 t	2	230-60 Hz	3	8 ft./min (2.4 m/min)	3.7 A
TT11N2303-10		1			32 ft./min (9.6 m/min)	12.4 A
TT11L2303-10		1			16 ft./min (4.8 m/min)	7.7 A
TT052N2303-10		2			16 ft./min (4.8 m/min)	5.4 A
TT052L2303-10	2 t	2	230-60 Hz	3	8 ft./min (2.4 m/min)	3.7 A
TT12N2303-10		2			16 ft./min (4.8 m/min)	12.4 A
TT12L2303-10		2			8 ft./min (2.4 m/min)	7.7 A

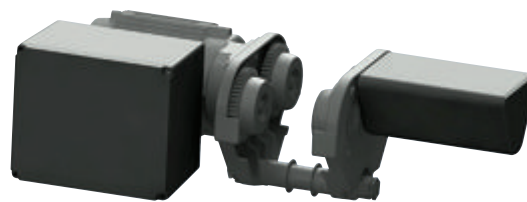
Standard: – Lifting height 10 ft. (3 m) / pendant cable 8 ft. (2.4 m)
 – Hook suspension
 Optional: – Lifting height of 20 ft. (6 m) / pendant cable 18 ft. (5.5 m)
 – Eye bolt suspension

tralift® TT electric trolley

design and performance for lifting operations

Tractel® trolleys are simple in design and allow for smooth transportation of loads on steel beams. The electric chain hoist serves as a lifting device.

The travel movement, tailored to the load capacity and the local conditions is either manually or electrically driven. The integrated anti-derail system ensures maximum safety. They are known for their handling characteristics and their longevity.



- 42 V low voltage control
- Side plates and load wheels made of cast iron
- Side plates made of die-cast aluminium and cast iron load wheels
- Protection IP 55
- Support bolts zinc-plated

MODEL	CAPACITY	CURRENT (PHASE)	VOLTAGE 60 HZ	TRAVEL SPEED 60 HZ	AMPERAGE	FLANGE WIDTH
TE1N1151	1 t	1	115-60 Hz	47 ft./min (14.4 m/min)	3,9 A	2-3½ in.* (50-99 mm)*
TE1N2303	1 t	3	230-60 Hz	47 ft./min (14.4 m/min)	1,7 A	2-3½ in.* (50-99 mm)*
TE1S2303	1 t	3	230-60 Hz	78/24 ft./min (24/7.2 m/min)	1.3 A / 1.5 A	2-3½ in.* (50-99 mm)*
TE2N2303	2 t	3	230-60 Hz	47 ft./min (14.4 m/min)	1,7 A	3-5½ in.** (76-139 mm)**

*Optional extended bars available: - 2-5½ in. (100-149 mm)
- 6-7½ in. (150-199 mm)
- 7½-9½ in. (200-240 mm)

**Optional extended bars available: - 5½- 7½ in. (140-199 mm)
- 7½-10¾ in. (200-259 mm)

WIDE RANGE OF ACCESSORIES



corso®
pushed-loads trolley



corso®
chain-operated trolley



corso®
clamp



topal™
clamp



topal™
hook



LOS ANGELES
1 800 675-6727
tractel.usa-west@tractel.com

BOSTON
1 800 421-0246
tractel.usa-east@tractel.com

MONTREAL
1 800 561-3229
tractel.canada@tractel.com

www.tractel.com