

Figure 1

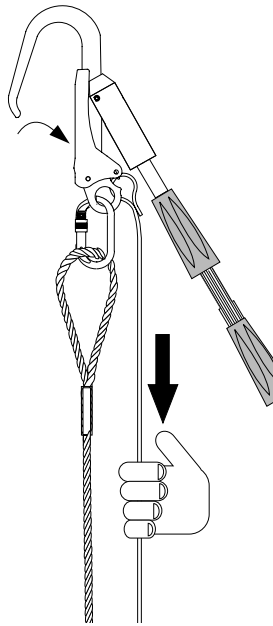


Figure 2

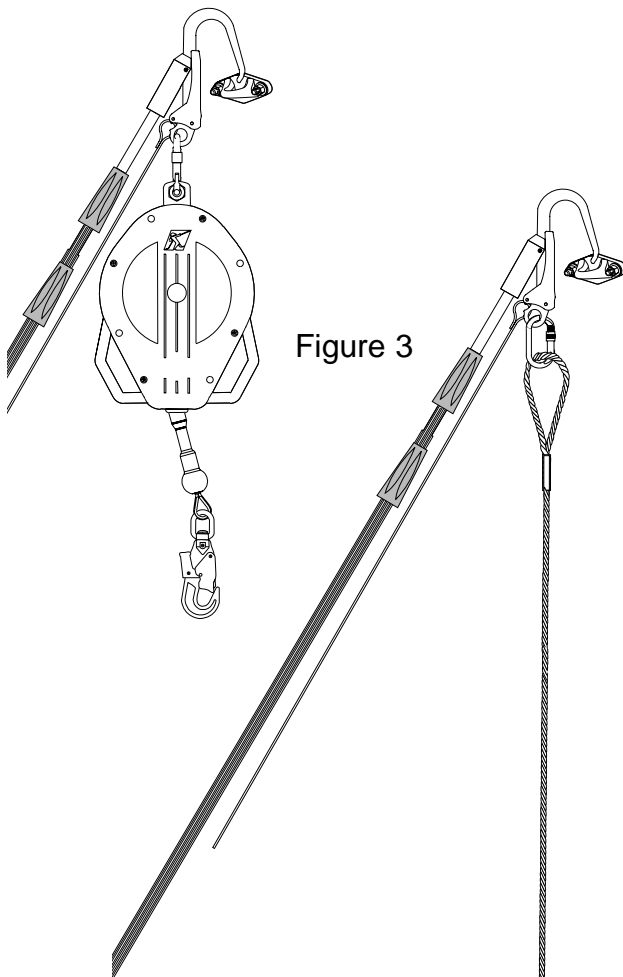


Figure 3

### Function

This system enables a belaying rope or a lifeline with retractable lanyard to be fitted from the ground. The system consists of a telescopic rod for anchoring a large opening connector, to which a belaying rope is attached, from a distance. A lifeline is fitted on the rope and the user attaches himself to the lifeline via his harness. A cord is used to open the connector from a distance.

### Description and Principle

Screw the connector at the end of the rod.

The rod consists of three telescopic tubes. Two plastic sleeves tighten or loosen the tubes and are used to adjust the rod to the required length.

Open the connector by pulling on the cord, and pass the connector around the anchorage point (fig.3), then release the cord.

The connector locks automatically in the "closed" position.

When the work has been completed, the user can open the connector by pulling on the cord then unhooking the system from the anchorage point.

### Technical specifications

- Rod material : fibre.
- Rod weight : 2685 g
- Connector weight : 765 g
- Opening connector : 50 mm
- APAVE certificate no.: 0082/352/160/01/04/0014
- Connector cod : 106117
- Rod cod : 106697

**fiche  
technique**

**ÉQUIPEMENT ANTICHUTE  
Connecteur M53**

ref. : T-2127 FR/GB

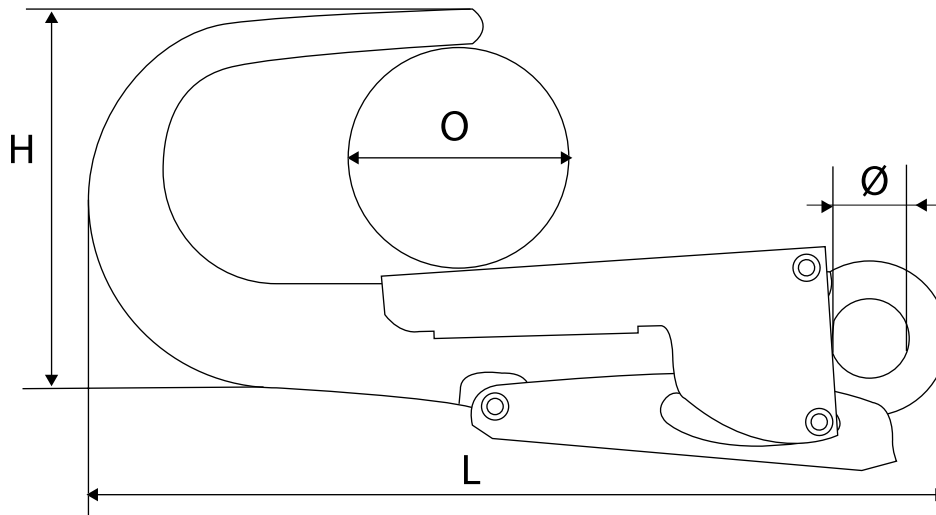
rev. n° : 01

**technical  
data sheet**

**FALL PROTECTION EQUIPMENT  
Connector M53**

date : 09/04/2004

page : 1/1




**Connecteur en acier ouverture double action.  
Steel double locking snap hook.**

**Dimensions/Dimensions (mm/in)**

- Longueur/length : 212 mm / 8,35 in
- Hauteur/Height (mm) : 102 mm / 4,02 in
- Ouverture/Opening : 53 mm / 2,09 in
- Ø : 20 mm / 0,79 in

**Caractéristiques mécaniques/**

**Mechanical characteristics**

- Résistance à la rupture/  25 kN  
Breaking strenght 55,19 Lbs
- Poids/Weight : 490 g / 1,08Lbs

**Matières et traitement/**

**Materials and heat treatment**

- Corps/body : Acier/Steel
- Finition/Finish : Zingage/zinc plated

**Utilisation/Use**

- Industrie/Industry

**Normes/Standards**

- Norme Européenne / : EN 362  
European standard