

U-bar safety tieback anchors

The standard U-bar safety tieback anchors are the economical solution for securing secondary safety lifelines or for equipment tieback. All varieties of standard models are available for every mounting method.

All our anchors are designed to meet or exceed all applicable safety codes, regulations and standards where applicable, including FEDOSHA, CALOSHA, ASME/ANSI and CAN/CSA-Z91-02.

TRS1800S and TRS2400S models

*U-Bar Safety Tieback Anchor welded to wide beam.
(without bottom plate)*

Materials:

U-bar

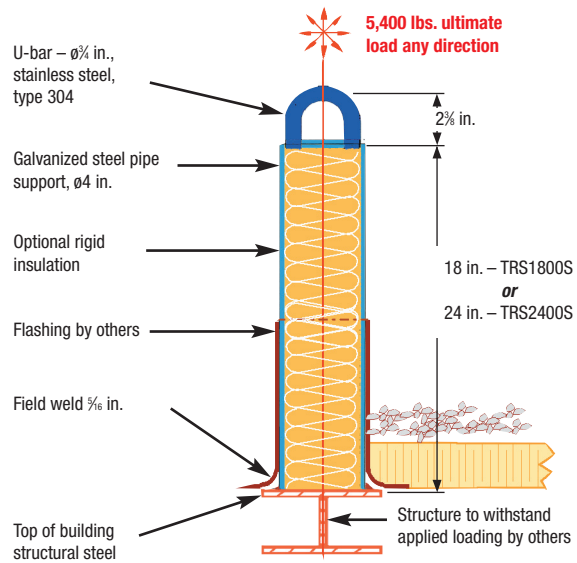
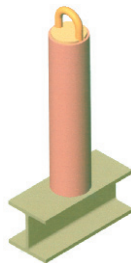
¾ in. dia., type 304, stainless steel

Pipe support

4 in. dia., galvanized steel

Notes

field weld;
E70XX electrode;
finish hot dip galvanized



TRT1200S and TRT1800S models

U-Bar Safety Tieback Anchor bolted to structure.

Materials:

U-bar

¾ in. dia., type 304, stainless steel

Pipe Support

4 in. dia., galvanized steel

Base and Clamp Plate

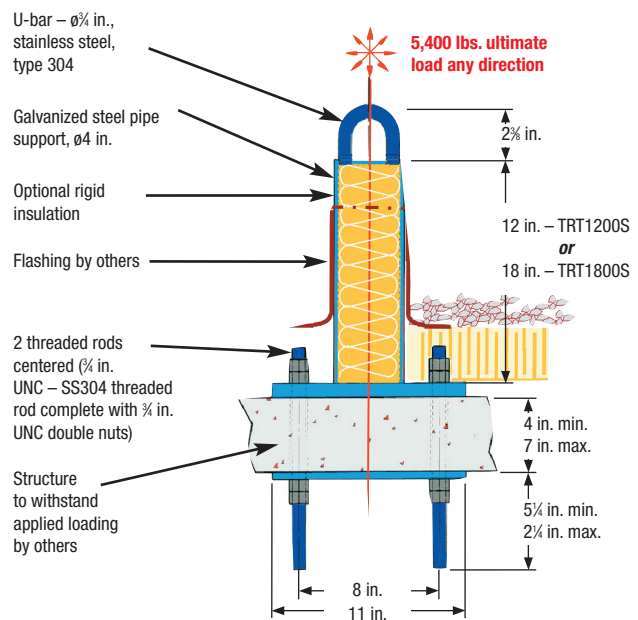
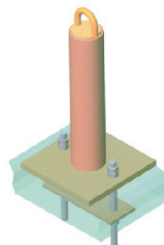
galvanized steel (11 in. square base plate and 11 x 4 in. clamp plate)

2 Threaded Rods and Nuts

¾ in. UNC – SS304 thread rod complete with ¾ in. UNC double nuts

Note

finish hot dip galvanized



TRE1200S and TRE1800S models

U-Bar Safety Tieback Anchor embedded anchor bolt into concrete.

Materials:

U-bar

3/4 in. dia., type 304, stainless steel

Pipe Support

4 in. dia., galvanized steel

Base Plate

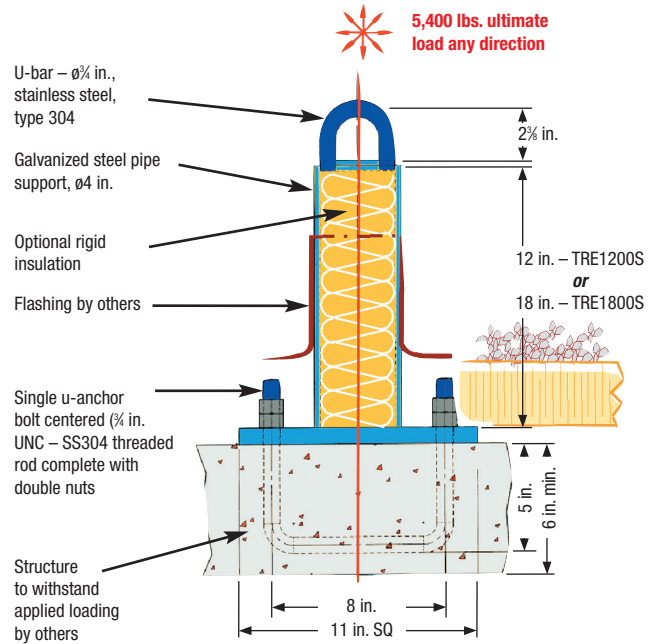
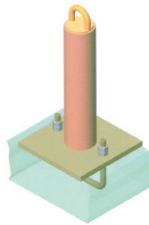
11 in. square, galvanized steel

U-Anchor Rod and Nuts

3/4 in. UNC – SS304 thread rod complete with 3/4 in. UNC double nuts

Note

finish hot dip galvanized



TRM1200S and TRM1800S models

U-Bar Safety Tieback Anchor adhesive anchor into concrete.

Materials:

U-bar

3/4 in. dia., type 304, stainless steel

Pipe Support

4 in. dia., galvanized steel

Base Plate

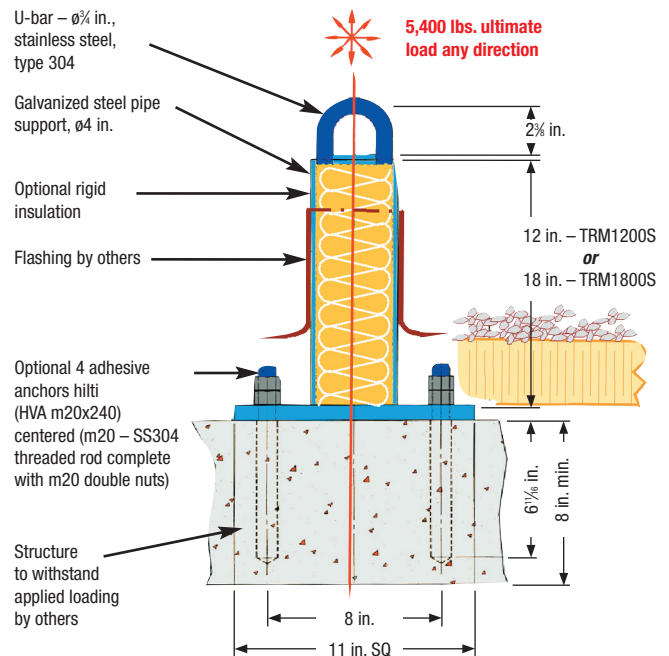
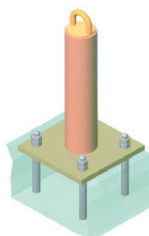
11 in. square, galvanized steel

Adhesive Anchor and Nuts

Hilti M20x240 – SS304 threaded rod complete with M20 double nuts (available)

Notes

pull test all adhesive anchors to 4,000 lbs. by others; finish hot dip galvanized



Wall Mounted Safety Tieback Anchors

When tiebacks are required on roofs where waterproofing or flashing is not an option, Tractel's wall mounted tiebacks provide a simple, inexpensive solution.

All varieties of standard models are available for every mounting method, including new or retrofit applications.

Like all Tractel tiebacks, they are load rated at 5400 lbs. in any direction, and meet or exceed all required safety codes.

TWE1000S model

Wall mounted safety tieback anchor embedded in concrete.

Materials:

U-bar

3/4 in. dia., type 304, stainless steel

Top Plate

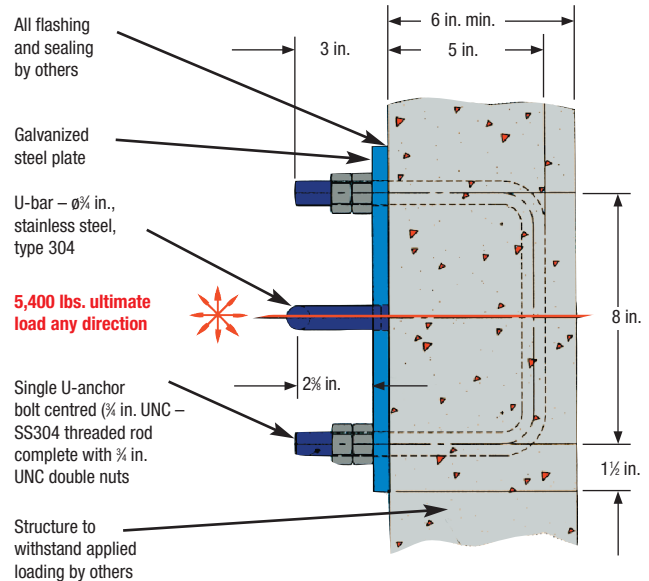
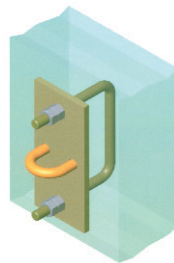
11 x 5 in., galvanized steel

U Anchor and Nuts

3/4 in. UNC – SS304 threaded rod complete with 3/4 in. UNC double nuts

Note

finish hot dip galvanized



TWT1000S model

Wall mounted safety tieback anchor bolted to structure.

Materials:

U-bar

3/4 in. dia., type 304, stainless steel

Top Plate

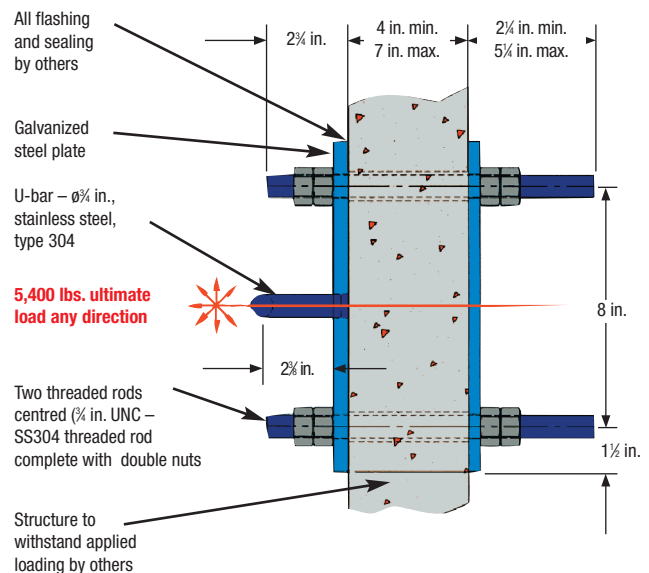
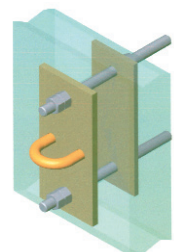
11 x 5 in., galvanized steel

Two Threaded Rods and Nuts

3/4 in. UNC – SS304 threaded rod complete with 3/4 in. UNC double nuts

Note

finish hot dip galvanized



TWM1000S model

*Wall mounted safety tieback anchor
adhesive anchor into concrete.*

Materials:

U-bar

3/4 in. dia., type 304, stainless steel

Top Plate

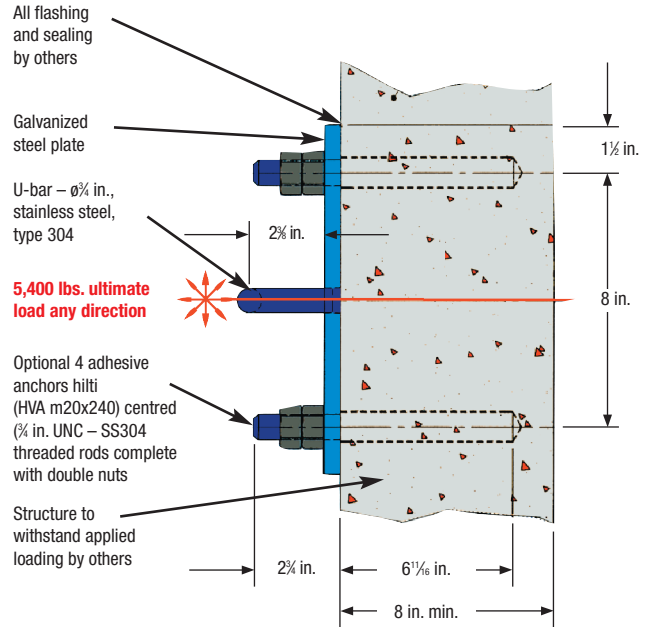
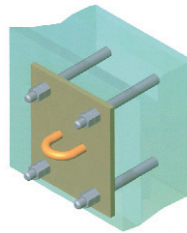
11 x 11 in., galvanized steel

Adhesive Anchors and Nuts

Four adhesive anchors hilti (hva m20x240) centred,
two 3/4 in. unc – ss304 threaded rods complete
with double nuts (available)

Notes

pull test all adhesive anchors
to 4,000 lbs. by others;
finish hot dip galvanized



TWC1000S model

Wall mounted safety tieback mounting method by others.

Materials:

U-bar

3/4 in. dia., type 304, stainless steel

Top Plate

11 x 5 in., galvanized steel

Notes

mounting method by others;
Tractel not responsible for incorrect installation;
finish hot dip galvanized

