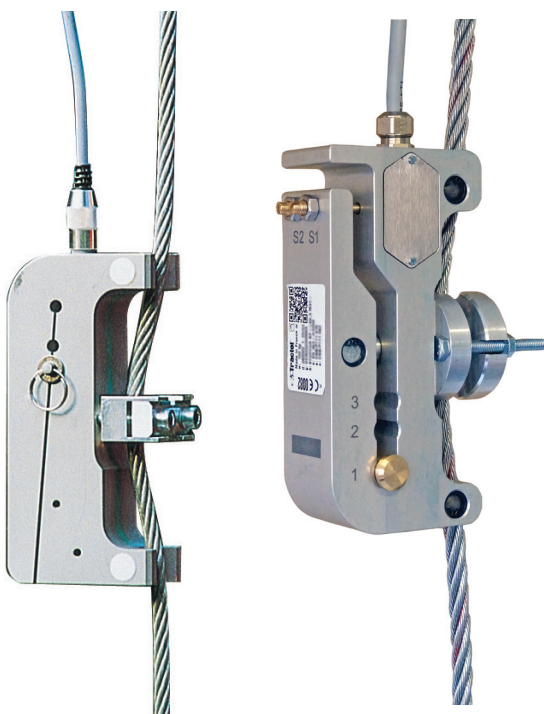




Dynasafe™ Mecha

**Affordable, quick and reliable
mechanical load limiters**



Dynasafe Mecha

Affordable, quick and reliable mechanical load limiters

The **Dynasafe Mecha 3.2, 7, and 12** are robust and cost-effective mechanical load limiters, which are designed to manage safety trip points on elevating equipment by being installed on a wire rope. They offer the simplest and most reliable solution for crane and lifting load limitation.

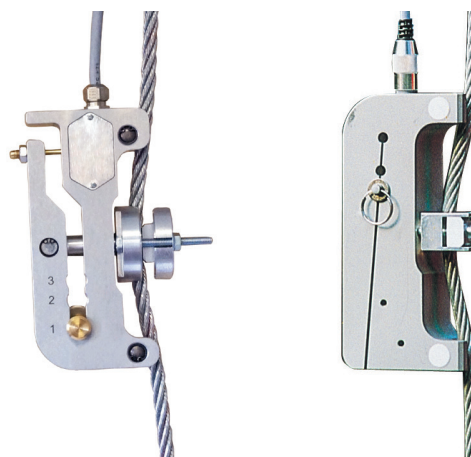
The devices come equipped with two independent trip points, ensuring maximum safety in all operations.

OPERATING PRINCIPLE:

The Dynasafe Mecha load limiter works by deforming its body when a load is applied. This deformation triggers high-precision microswitches embedded within the device, giving an "all-or-nothing" signal.

APPLICATIONS:

- Overhead travelling crane limitation
- Hoist limitation
- Elevator
- Safety and lifting applications



STRENGTHS:

- Simple and quick installation on the lifting cable
- Two settable trip points, for greater flexibility and customization
- During lifting or pulling : protect the equipment in case of overload or slack rope
- During sideways movement: limitation of the speed according to the load

STANDARDS

- Machinery: **2006/42/CE**
- Machinery safety: **EN13849-1**

TECHNICAL SPECIFICATION:

MODEL	Mecha 3.2	Mecha 7	Mecha 12
Code	293599	198959	38668
Wire rope ø	5-16 mm	17-26 mm	27-36 mm
Capacity on fall	200 to 3 200 kg	500 to 7 000 kg	1 000 to 12 000 kg
Installation	Directly on the dead end wire rope		
Trip Points	2 (option to have these set in factory)		
Contacts	For each threshold : <ul style="list-style-type: none">• 1 normally open• 1 normally closed• 1 common		
Trip point power	230 VAC		
Trip point amperage	4A		
Connections	7 cores electrical cable with cable gland		
Tare adjustment	By fine thread screws		
IP Protection	IP 67	IP 55	
Material	Anodised Aluminium		

Dynasafe Mecha

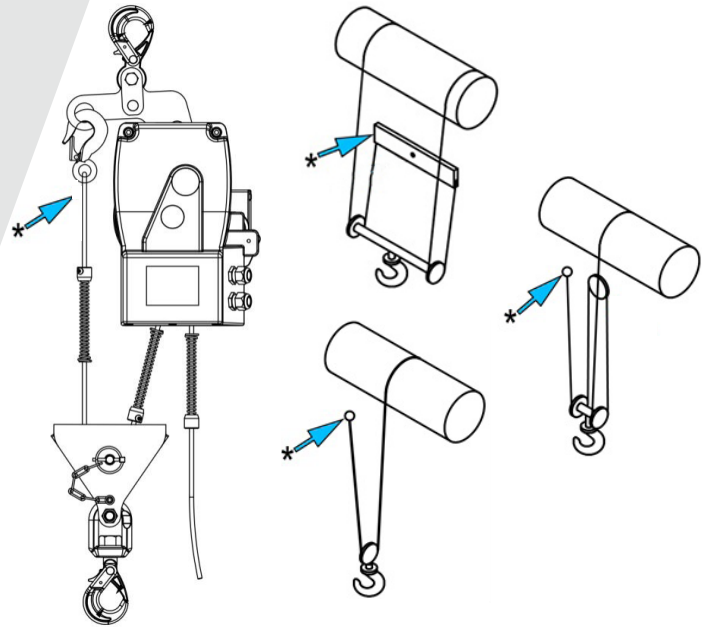
Affordable, quick and reliable mechanical load limiters



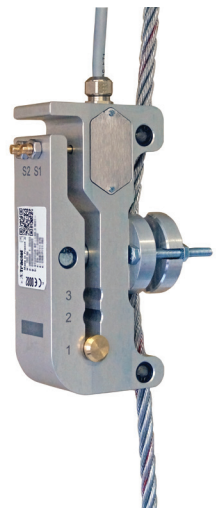
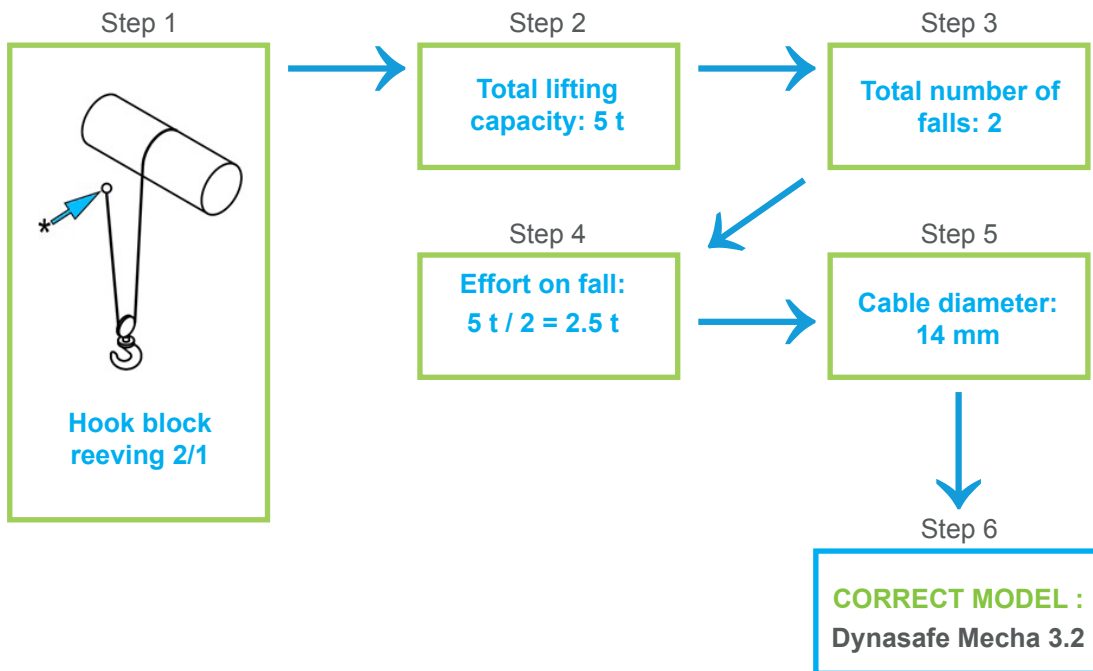
Selecting the correct Dynasafe Mecha

How to select the right load limiter:

- Step 1 - Verify the presence of a fixed fall in the system : dead end or equalizing sheave (* examples on the figures where the Mecha can be installed)
- Step 2 - Find the total lifting capacity
- Step 3 - Find the numbers of falls
- Step 4 - Divide the total lifting capacity by the number of falls
- Step 5 - Find the wire rope diameter
- Step 6 - Check which Dynasafe is the right load limiter



Example :



MODEL	Mecha 3.2	Mecha 7	Mecha 12
Code	293599	198959	38668
Wire rope \varnothing	5-16 mm	17-26 mm	27-36 mm
Capacity on fall	200 to 3 200 kg	500 to 7 000 kg	1 000 to 12 000 kg

DISCOVER OUR OTHER PRODUCTS FOR
LOAD MEASUREMENT AND CONTROL



Dynafor™ Industrial



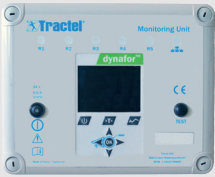
Dynafor™ Expert



Dynafor™ Pro



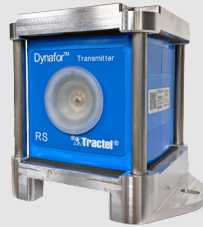
Dynafor™ HHD



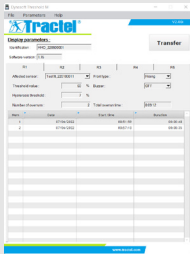
DMU



AL63



Dynafor™ Transmitter



Dynasoft
software

GLOBAL REACH



FRANCE AND EXPORT
Tractel S.A.S.

RD 619 Saint-Hilaire-sous-Romilly
BP 38 Romilly-sur-Seine
10102, France
Phone: +33 3 25 21 07 00
Email: info.tsas@tractel.com

www.tractel.com

